



## USB-TO-NETWORK (UTN)

### Using non-network-enabled USB Output Devices (GDI Printers, Multifunctional Peripherals, Copiers) via the Network

Until now so-called GDI printers – i.e. low-priced USB printers with the Windows interface GDI (Graphic Device Interface) – or non-network-enabled multifunctional peripherals (MFP) could only be deployed locally as single workstation printers because they are not equipped with a processor, have very little memory at their disposal, and rely on the resources of a Windows PC for processing print data. Also, such USB output devices communicate exclusively via proprietary printer languages. For these reasons they could not be shared in a network. The new software release 10.2.x by SEH includes the feature USB-to-Network (UTN). This allows users to access GDI printers, non-network-enabled copiers, and MFPs via the net just like a fully developed network printer. This white paper explains how using the USB print servers PS03a, PS23a, PS34a, PS34a-PoE, and PS54a-G with UTN makes it possible to access such output devices in a Windows network (Windows XP or higher) independent of make and model.

**MARGARETE KEULEN**

*Marketing Communications Manager*

*Version 1.0*

*June 2007*

© SEH Computertechik GmbH

**CONTENTS**

- 1. UTN – FIELDS OF APPLICATION AND BENEFITS 3**
- 2. MODE OF OPERATION 4**
- 3. REQUIREMENTS FOR USING UTN 5**

## 1. UTN – FIELDS OF OPERATION AND BENEFITS

UTN is a function of the software version 10.2.x for USB print servers of the SEH "PS" series. With UTN all non-network-enabled USB output devices (e.g. GDI printers, MFPs, copiers) can be accessed via a Windows network (Windows XP or higher). To this purpose UTN uses the original printer drivers of these USB output devices. As a consequence, users benefit from the entire functional range of the devices just as if they were locally connected to a PC or a notebook. With MFPs this includes printing, copying, scanning, and faxing.

The fields of operation are identical to those of fully developed network printers and MFPs, such as:

- ▶ Workgroup printing
- ▶ Mobile printing
- ▶ Scan to network
- ▶ Faxing via the network

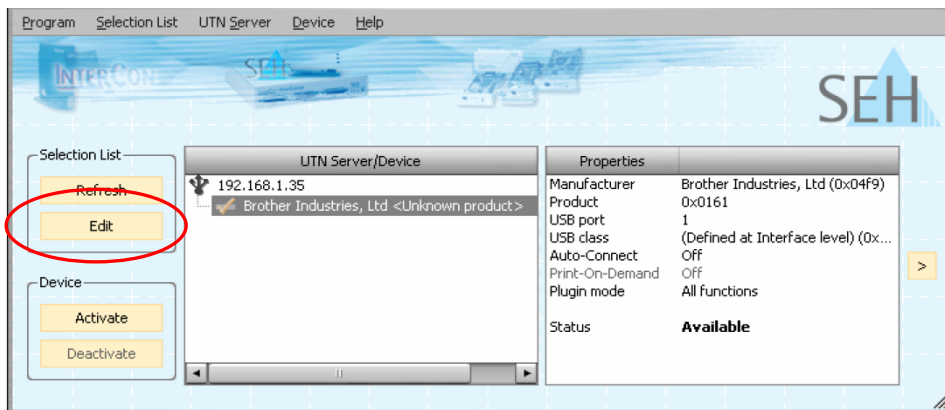
Several features of UTN enable users to easily and comfortably avail themselves of these possibilities, such as the following:

- ▶ **Autostart:** Upon booting the user's client the SEH UTN Manager is activated.
- ▶ **AutoConnect:** The respective USB output device will be automatically connected as soon as the SEH UTN Manager is activated.
- ▶ **Print-on-Demand:** This function establishes the connection to the respective USB output device automatically for the duration of a print job. As soon as the print job is done, the connection is released so that the device is available for other users.
- ▶ **Online helpdesk** (English and German)

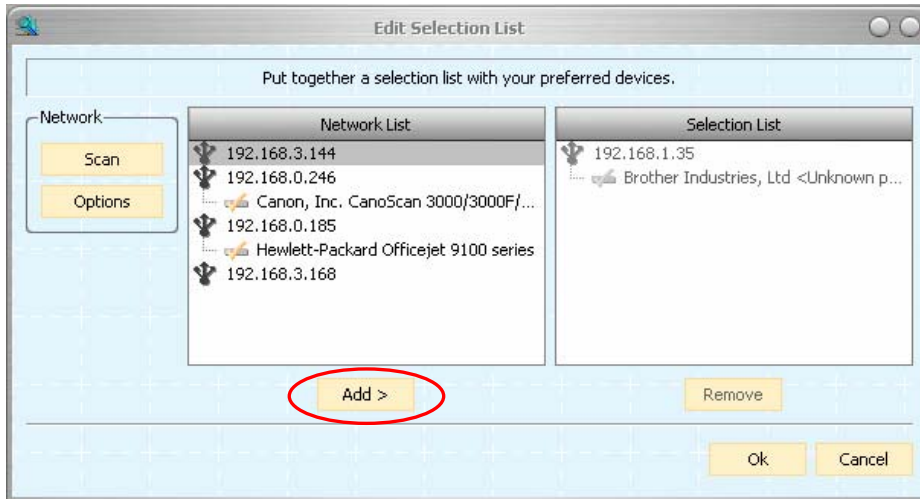
## 2. MODE OF OPERATION

As is the case with a locally connected non-network-enabled MFP or GDI printer, UTN establishes a point-to-point connection. As a consequence, only one user at a time can access the output device. If this device is supposed to be available for several users it has to be disconnected after completing a print, scan, or copy job. It is possible to configure this to happen automatically

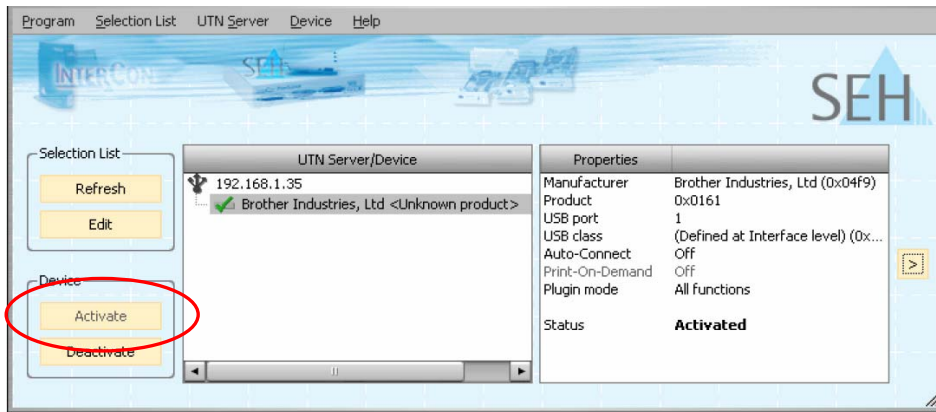
Before using UTN the SEH UTN Manager must be installed on the user's client (PC, notebook). When the print server is configured, the respective printer port must be set to "UTN". Users can then start the SEH UTN Manager to select USB output devices which they want to connect to the network via UTN (Fig. 1 and 2) and activate UTN (Fig. 3).



**Fig 1: UTN Manager: GUI for connecting USB output devices to the network**



**Fig. 2: Selecting the available USB output devices to be accessed with UTN via the Selection List of the UTN Manager**



**Fig. 3: UTN Manager: UTN is activated**

If the SEH print server features several USB ports, it is possible to connect non-network-enabled USB output devices via UTN while at the same time network printers can be connected in the “normal” way as well, so that all print server functions are available.

### 3. REQUIREMENTS FOR USING UTN

In principle all non-network-enabled GDI printers, MFPs, and copiers, independent of make and model, can be connected via UTN to the network. UTN can be used in Windows networks (Windows XP or higher) with the following print servers if these are equipped with software version 10.2.x (per default or via download of a free update from the SEH website: [www.seh-technology.com](http://www.seh-technology.com)):

- ▶ PS03a (10BaseT/100BaseTX, 2x USB 2.0 HS, with separate hub extendable to 5)
- ▶ PS23a (100BaseFX, 2x USB 2.0 HS, with hub extendable to 5)
- ▶ PS34a / PS34a-PoE (10BaseT/100BaseTX, 1x parallel, 1x USB 2.0 HS, with separate hub extendable to 4)
- ▶ PS54a-G (WLAN 802.11g, 1x parallel, 1x USB 2.0 HS, with separate hub extendable to 4)